

Farní kostel sv. Bartoloměje v Rozsochách



Historie (čerpáno z <http://www.rozsochy.cz>)

Počátky farního kostela sv. Bartoloměje v Rozsochách nejsou sice dochovanými písemnými prameny přesněji podchyceny, přesto však je možno na základě analýzy listin a písemností vrcholného středověku jeho vznik určit poměrně s velkou přesností a spolehlivostí. Nejstarší dosud známou zmínkou o vsi Rozsochách, respektive jejím kostele je listina Demetera z Bukova z roku 1285, jíž postupuje doubravnickému klášteru sv. Kříže patronátní právo kostela v Olší. Jako jeden ze svědků je zde uveden rozsošský farář Jan a lze tedy předpokládat, že v tomto roce již byla v Rozsochách fara a kostel.

Výrazné změny v historii kostela v Rozsochách nastávají až od 60. let 18. století za života Maxmiliána Josefa Mistrovského. Od roku 1763, přistupuje Maxmilián k podstatné barokizaci stavby. Tento zásah byl doprovázen obnovením zdejší farnosti v roce 1763. Současně se založením fary proběhla celková přestavba kostela v pozdně barokním duchu. Rekonstrukci financoval do značné míry majitel panství a současně i patron kostela Maxmilián Josef Mitrovský. Jaký byl důvod stavebních prací, není známo. Je možné, že souviselo s jakousi modernizací kostela při obnovené farnosti. Nabízí se však také varianta poškození staršího kostela při velkém požáru obce v roce 1752, o němž nejsou známy podrobnější informace.

V roce 1766 byl kostel znovu vysvěcen a teprve v průběhu roku 1767, tedy v podstatě až po ukončení všech prací na stavbě kostela, bylo rozhodnuto o zbudování dvou nových věží, připojených zvnějšku ke kostelní stavbě. V říjnu toho roku byly položeny jejich základy za účasti 11 zedníků v ceně 42 zlatých. V jejich stavbě se pokračovalo i dalšího roku, kdy byly dostavěny a zastřešeny. Jejich výstavba stála v roce 1768 250 zlatých 52 krejcarů. V dalším roce byly do kostela doplněna pouze železná zárubeň s kováním ke dveřím. Pozdně barokní přestavba kostela sv. Bartoloměje byla v podstatě ukončena.

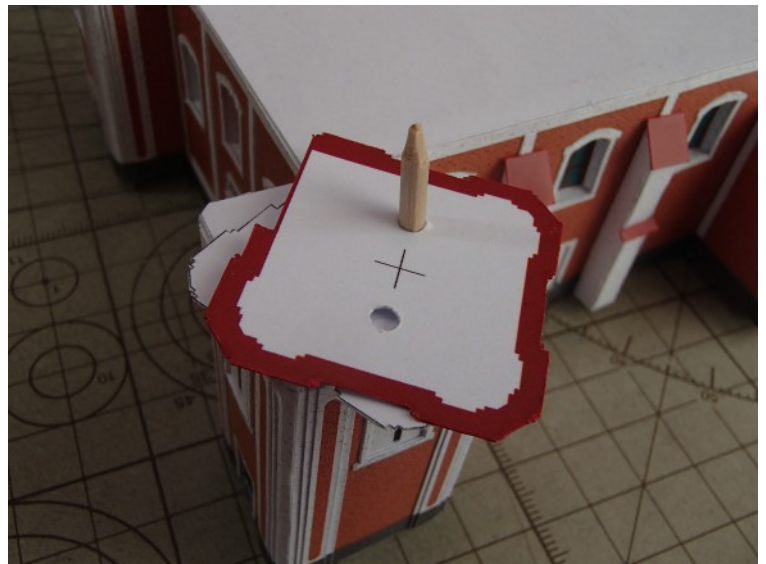
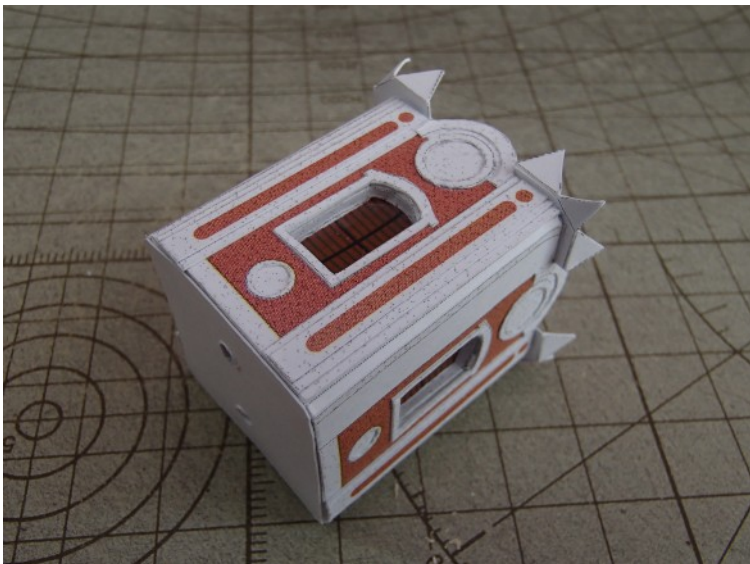
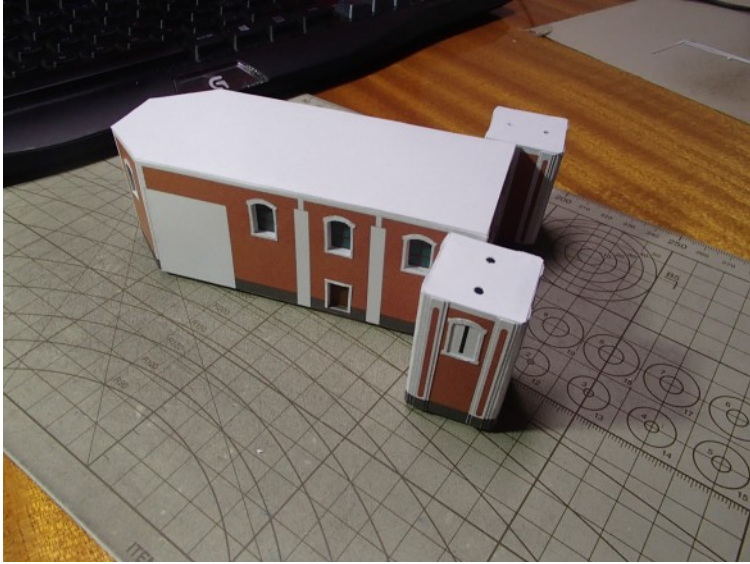
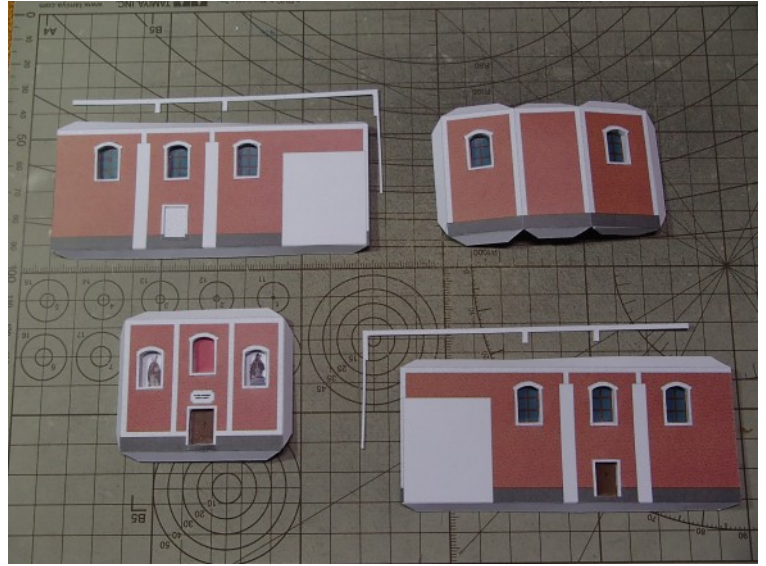
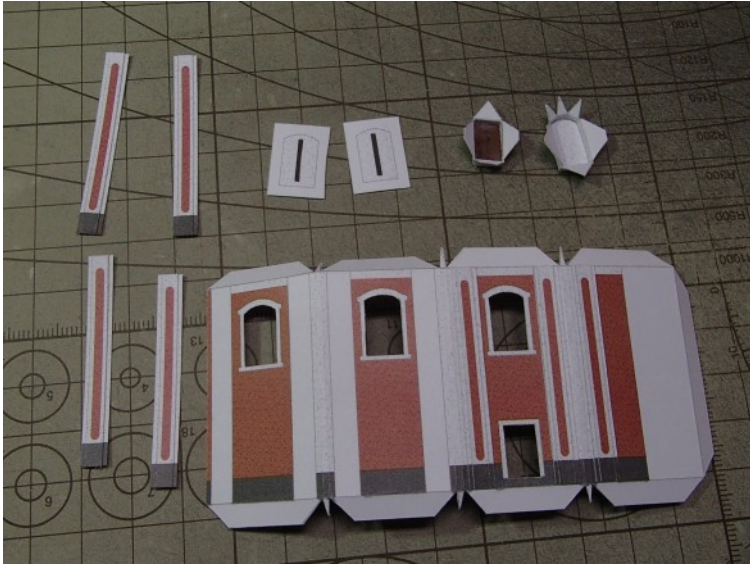
Návod:

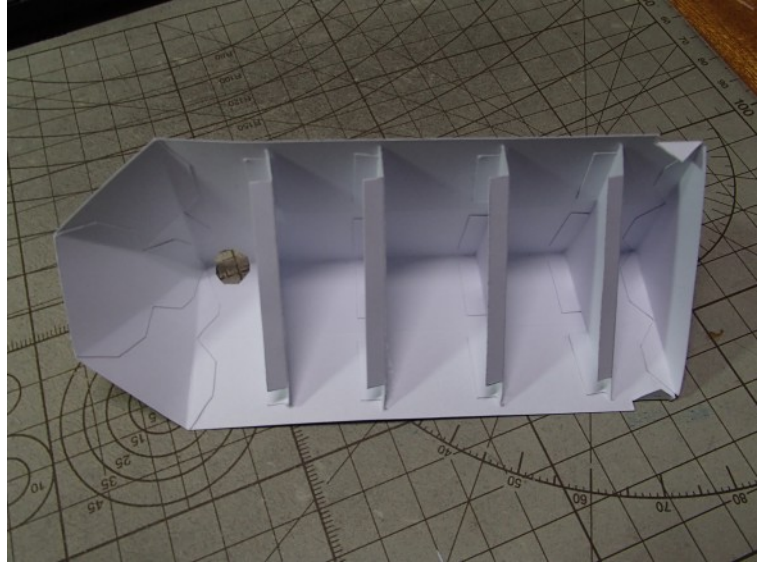
Model vytiskněte na 200g papír (kromě označené strany s věžičkami – tisknout na 120g papír). Při lepení doporučuji nejdříve slepit modře očíslované jednotlivé části (domy, střechy, věž, vchod apod.), poté je slepit k sobě, celek nalepit na podstavec a nakonec přidat doplňky (parapety, ozdoby, střešní okna, sokl apod.). Model můžete oživit trávou, keřem či stromem.

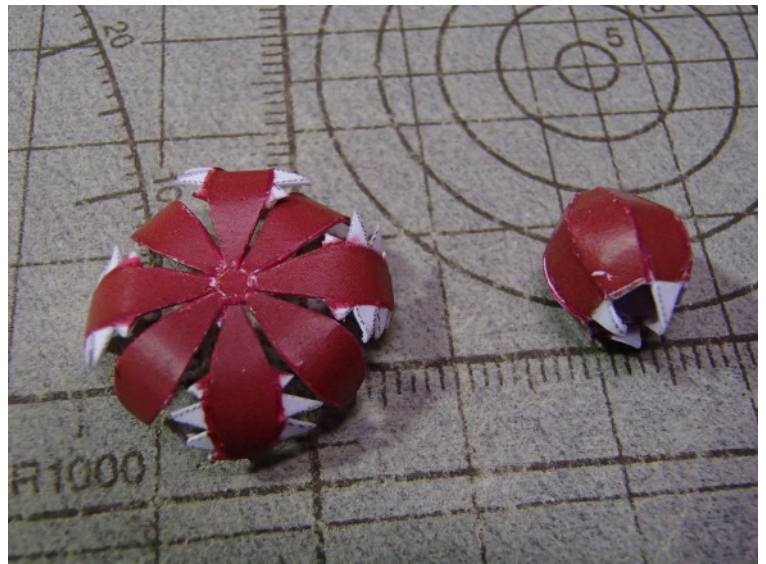
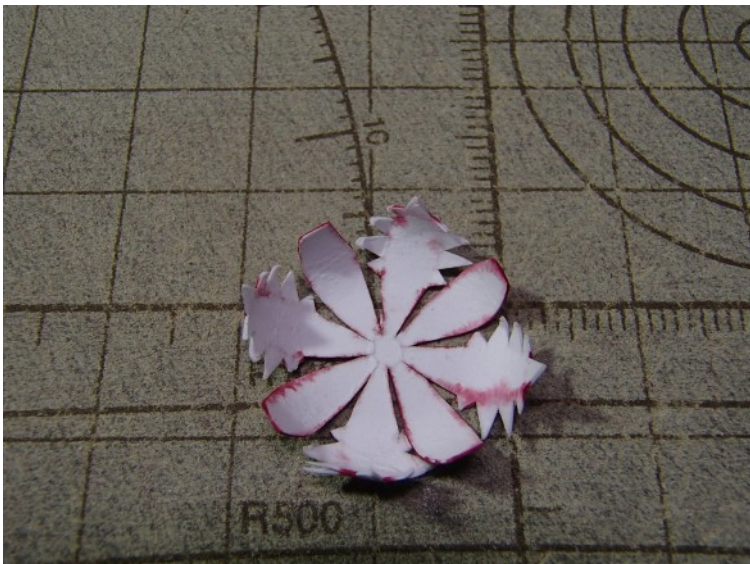
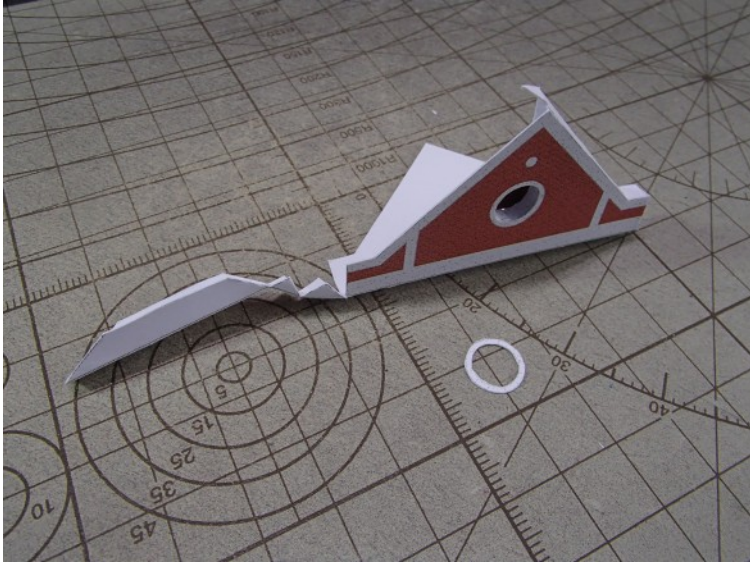
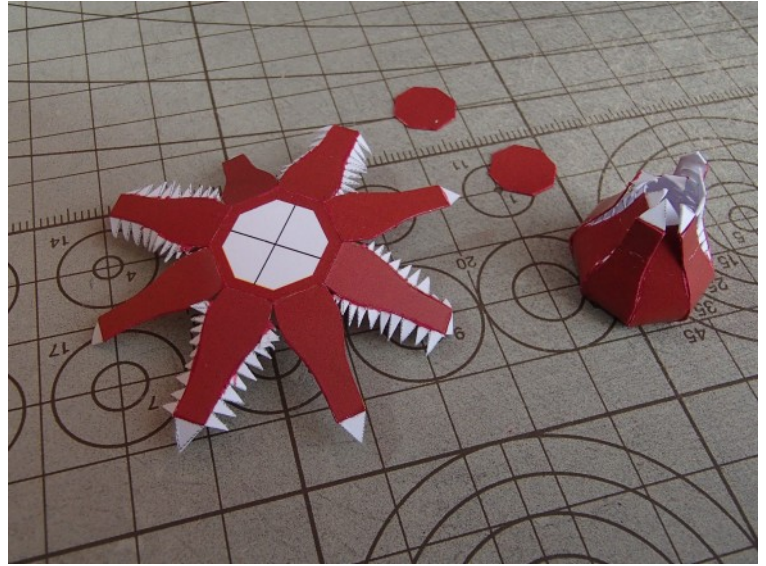
Měřítko: 1:200

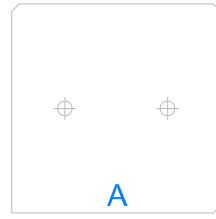
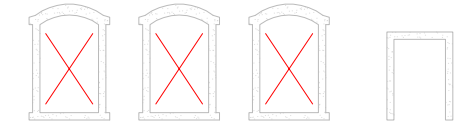
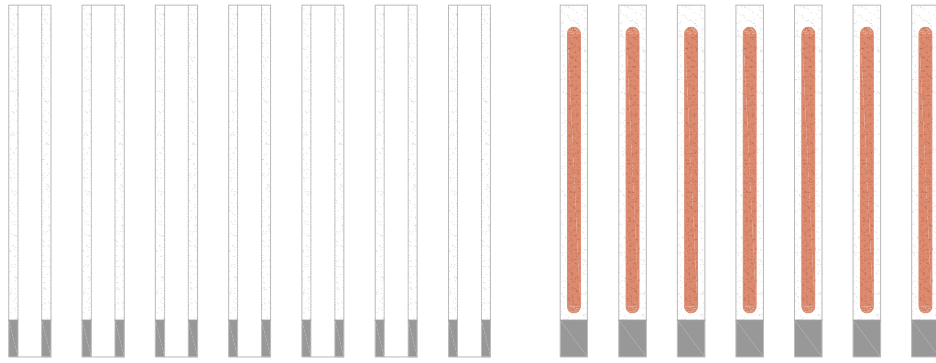
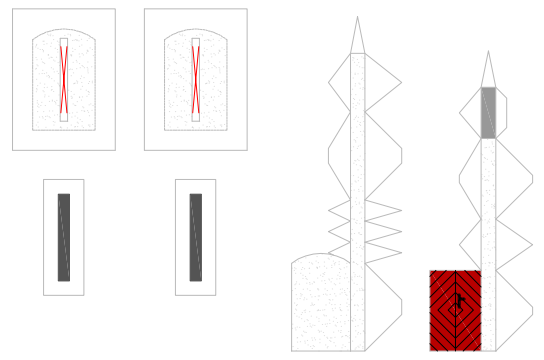
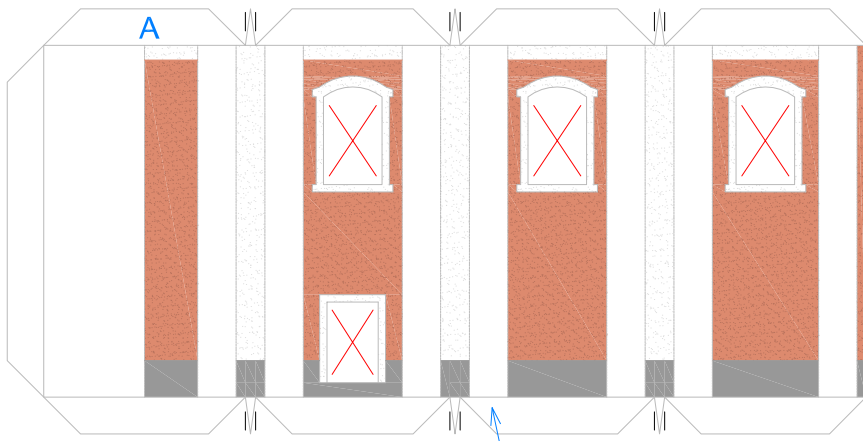
PS: Pokud se Vám model líbí, napište mi. Pokud se Vám nelíbí, nebo máte nějaké připomínky či náměty na vylepšení, napište mi též. Děkuji. pavel.styl@seznam.cz, <http://papir.pavelstyl.cz>



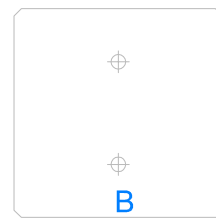
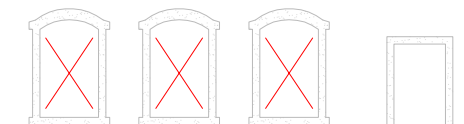
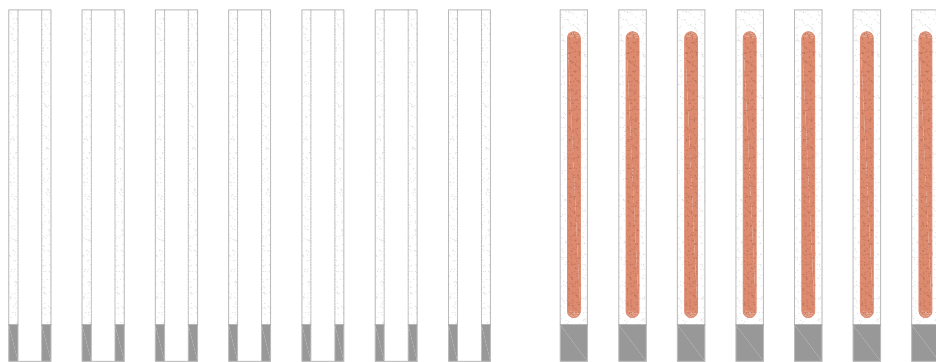
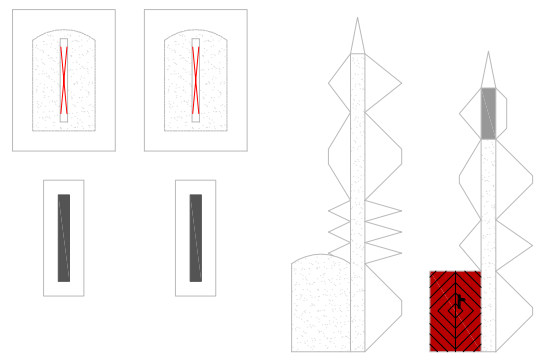
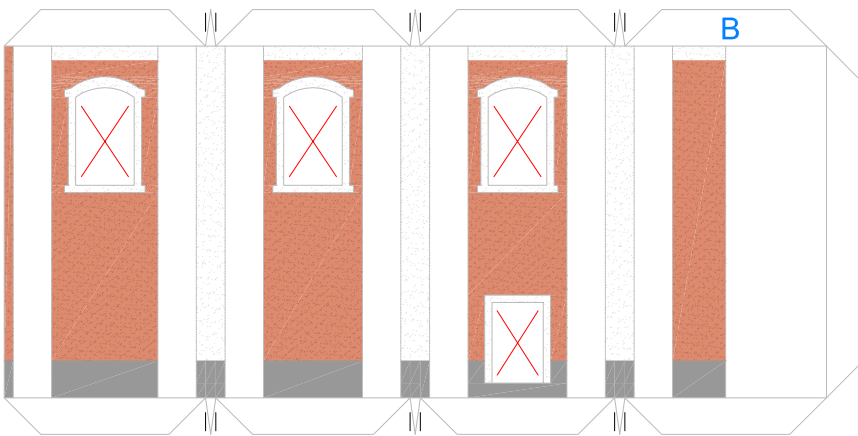
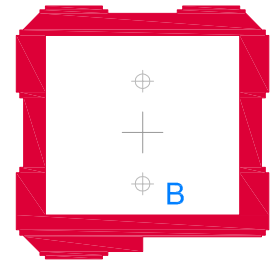
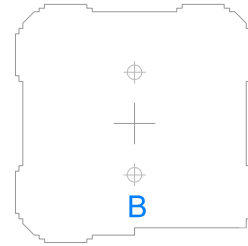
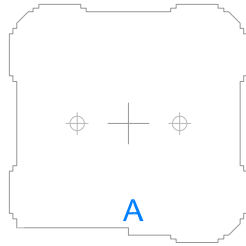
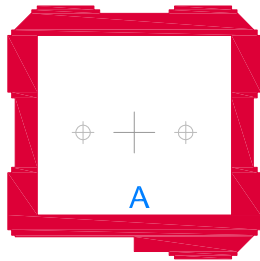
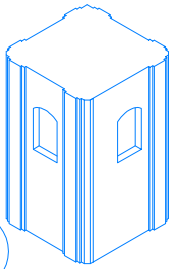




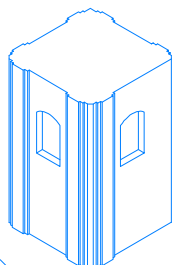


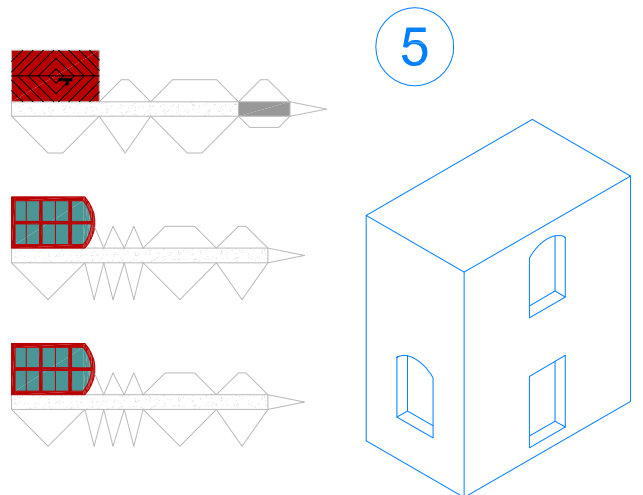
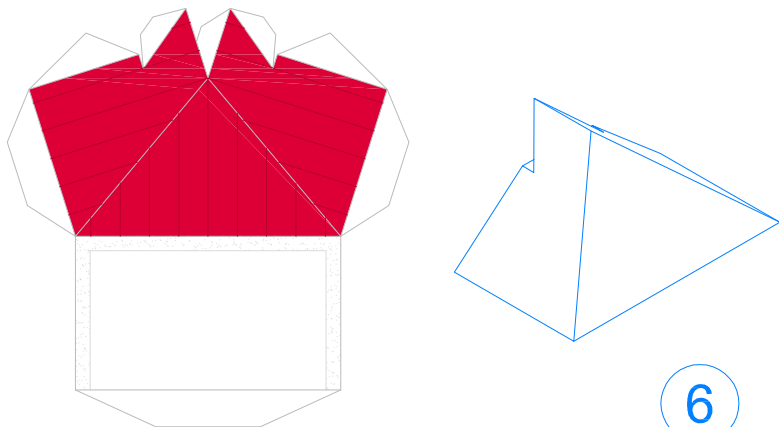
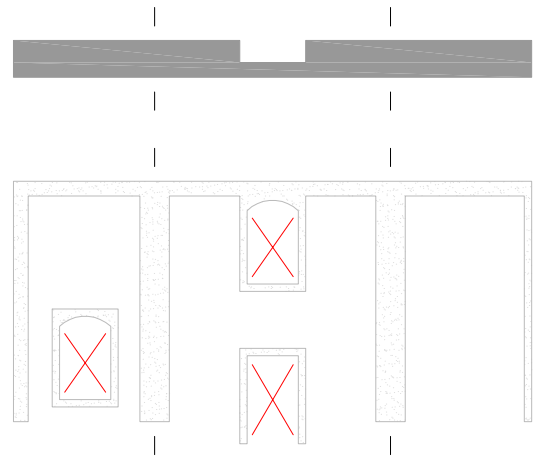
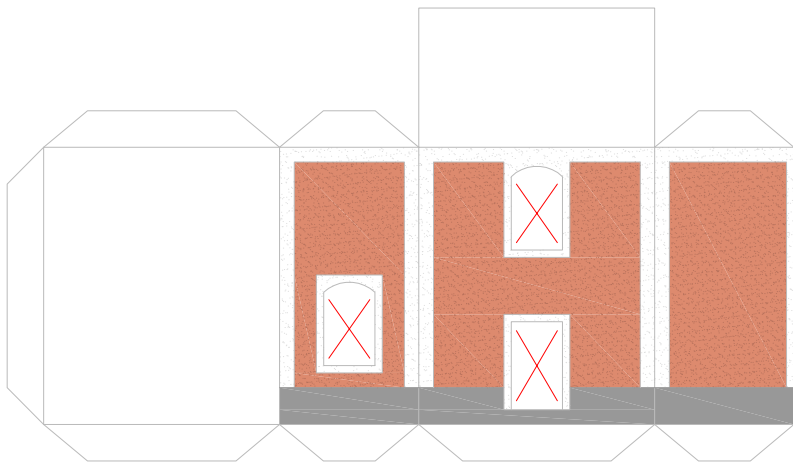
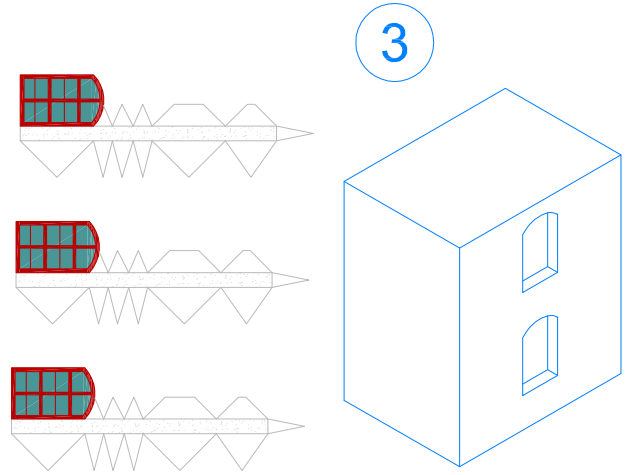
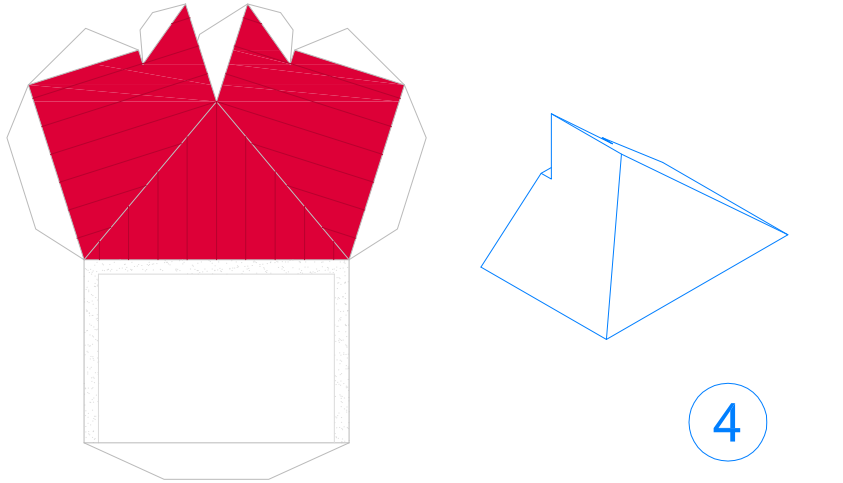
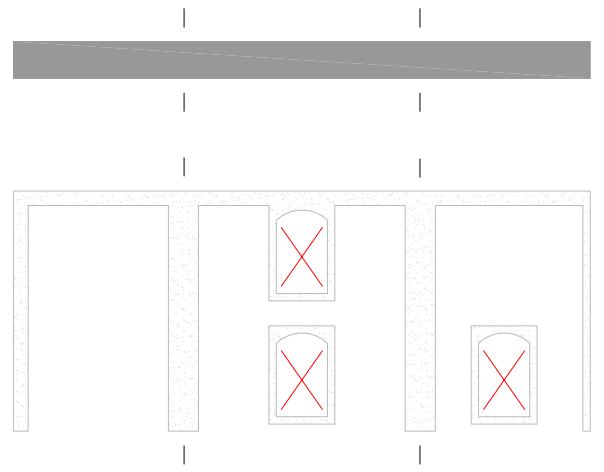
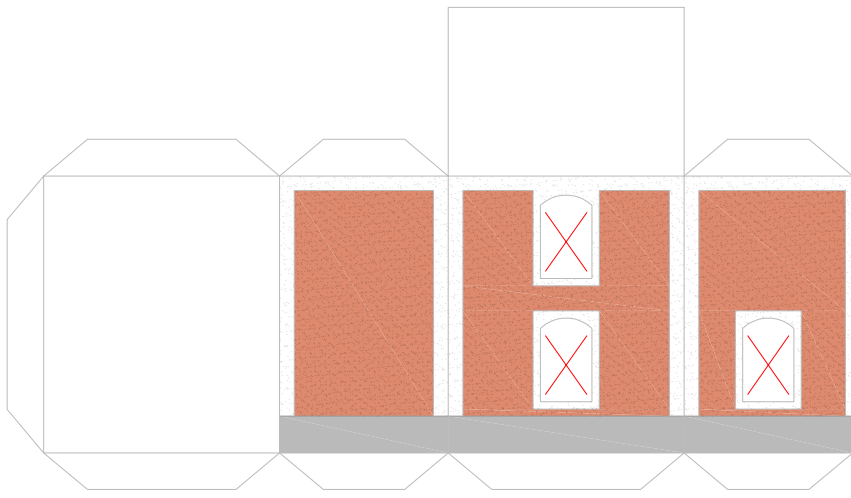


1



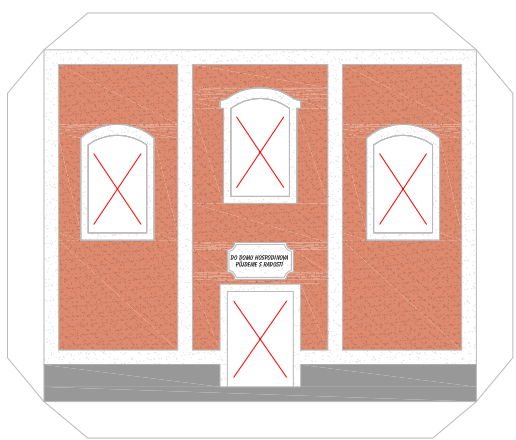
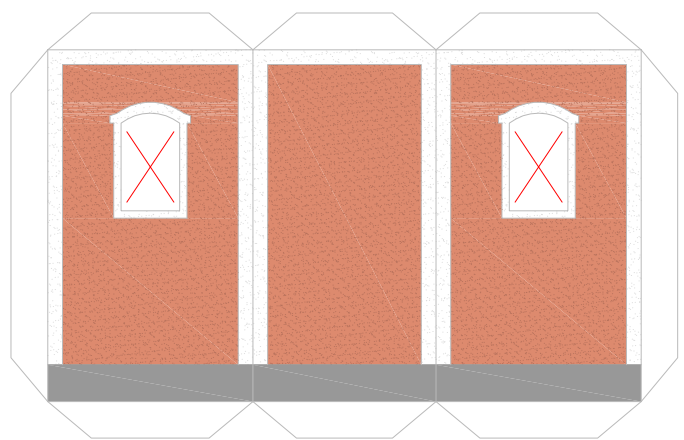
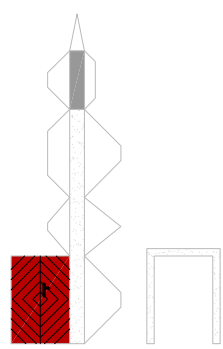
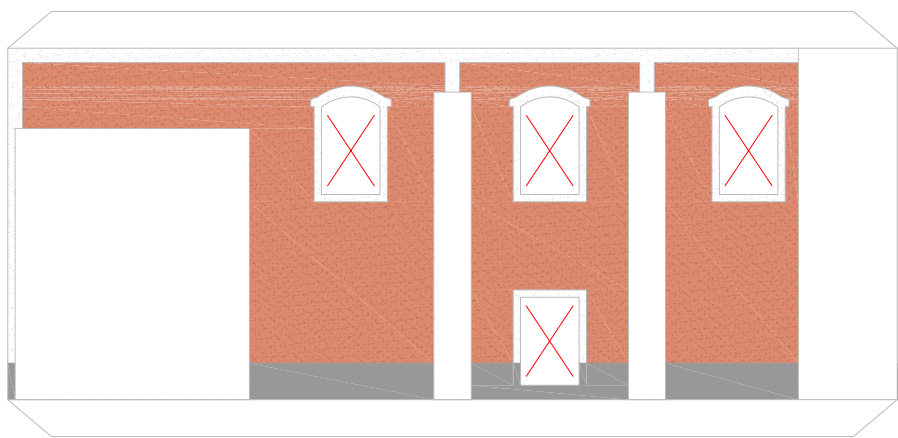
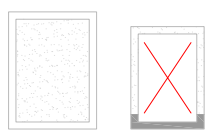
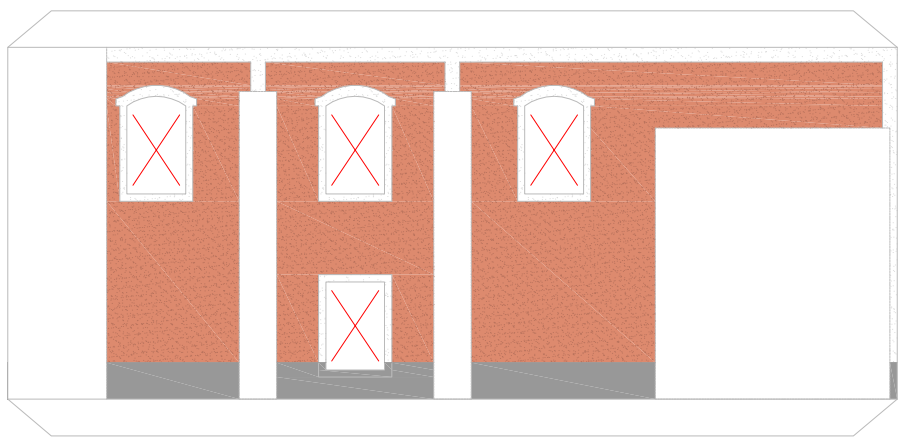
2



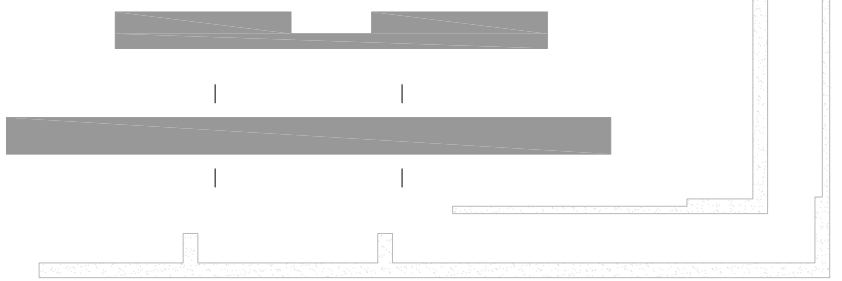
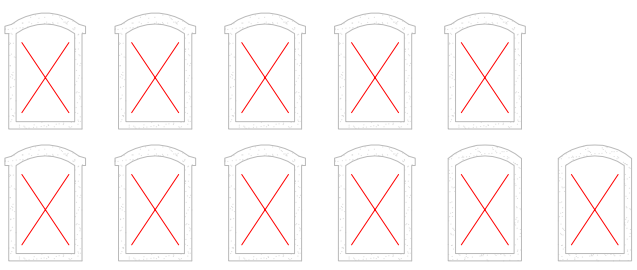


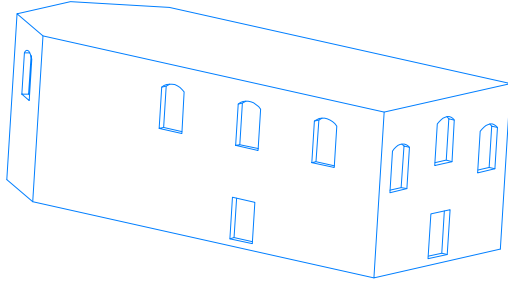
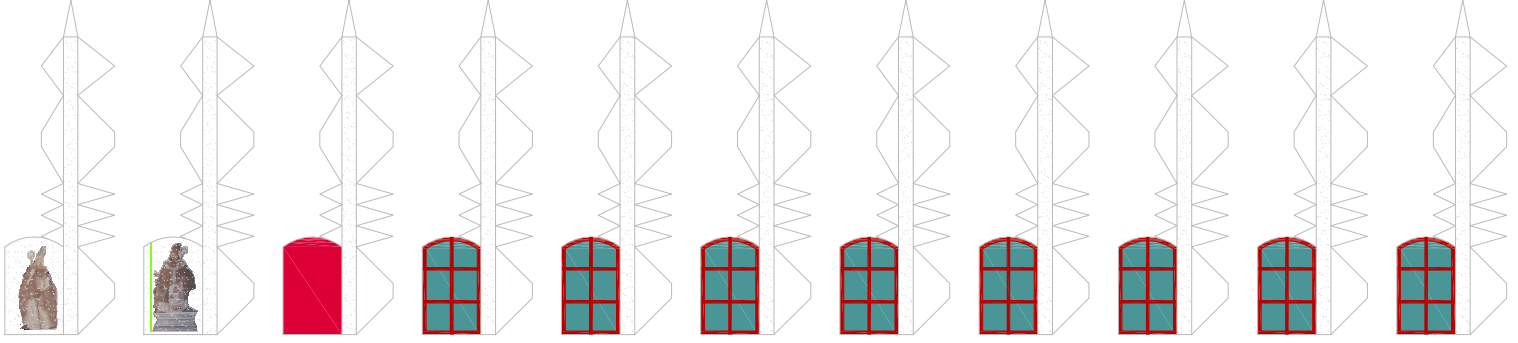
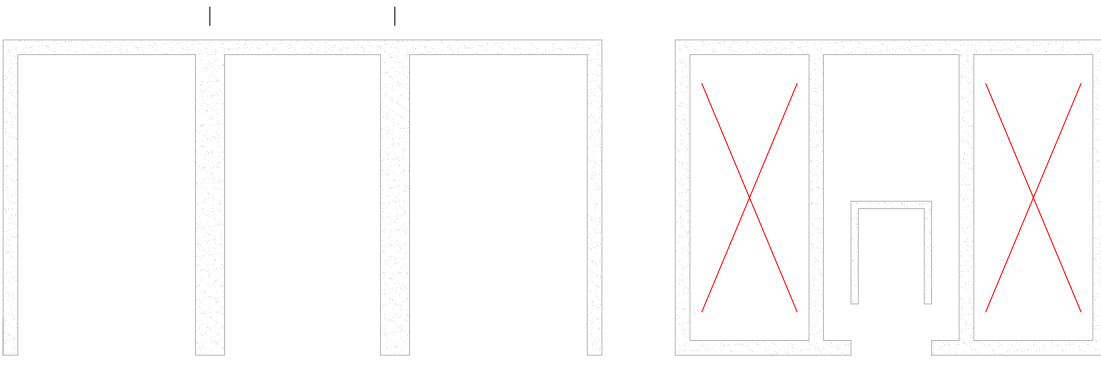
Pavel Štyl
pavel.styl@seznam.cz
http://papier.pavelstyl.cz
04/2014

Farní kostel sv. Bartoloměje v Rozsochách

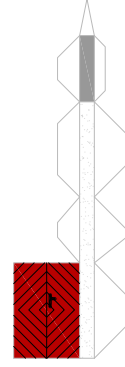


PO ZEMĚNÍM
KROKŮM V KROKŮM





7



Žebro

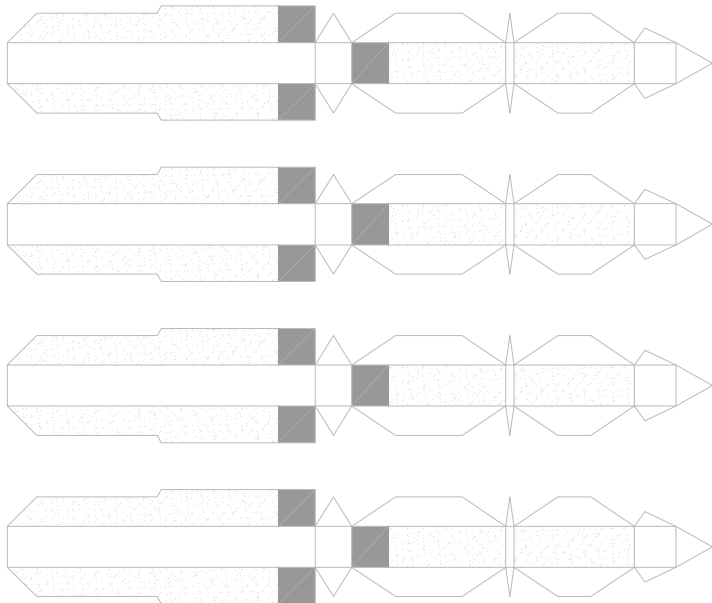
Žebro

Žebro

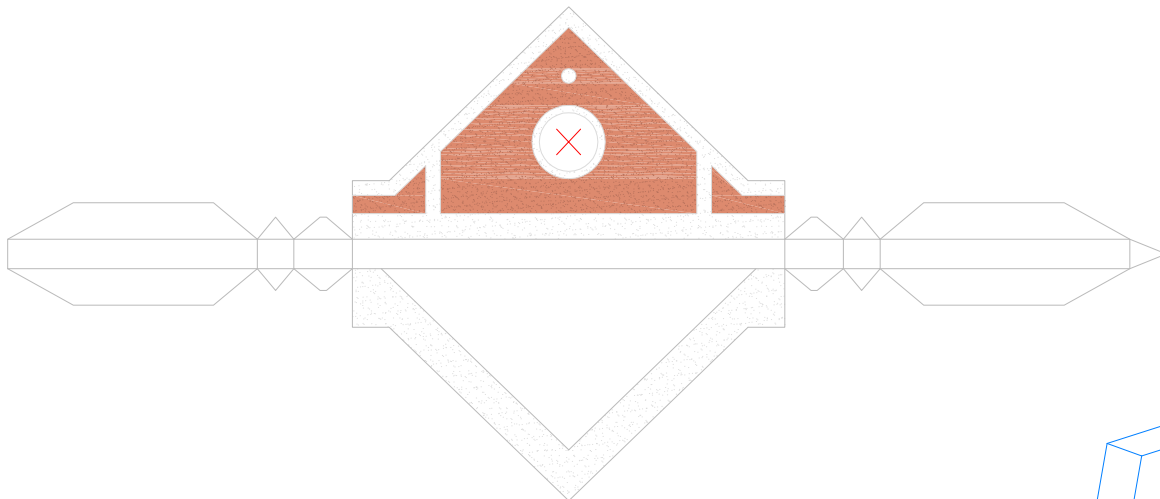
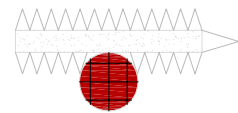
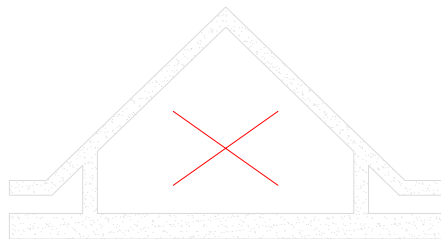
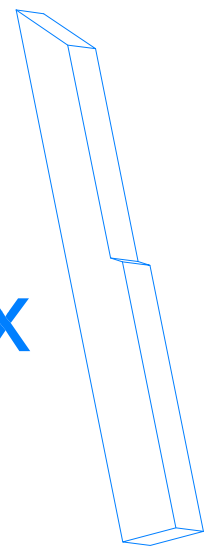
Žebro



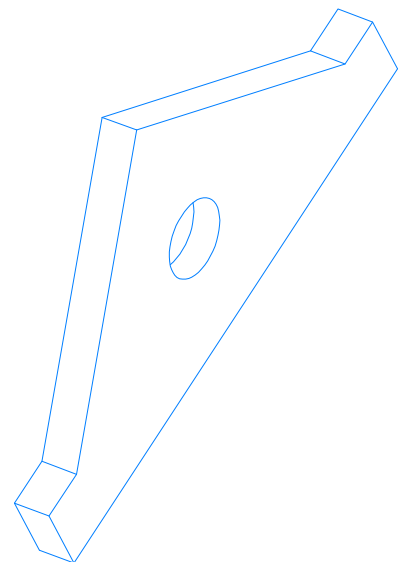
8

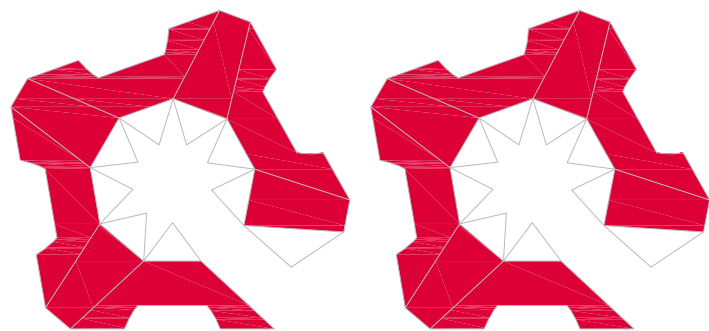
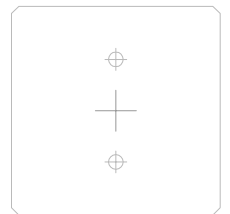
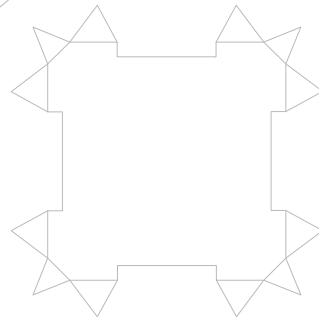
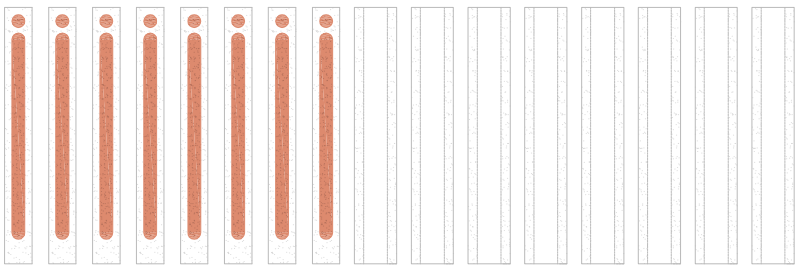
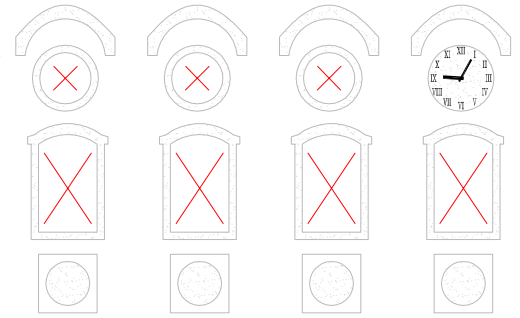
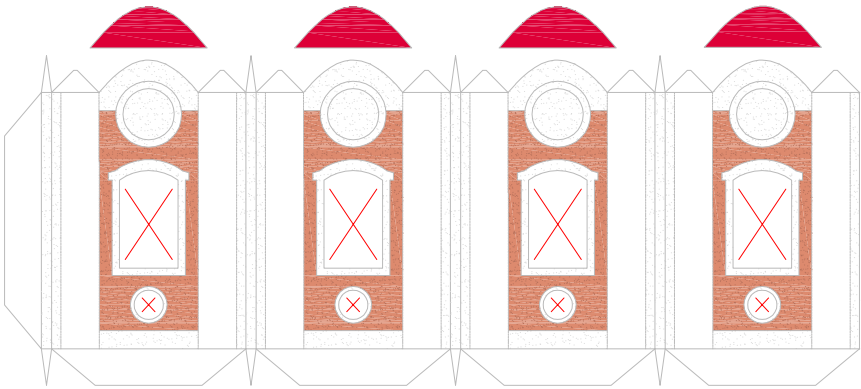
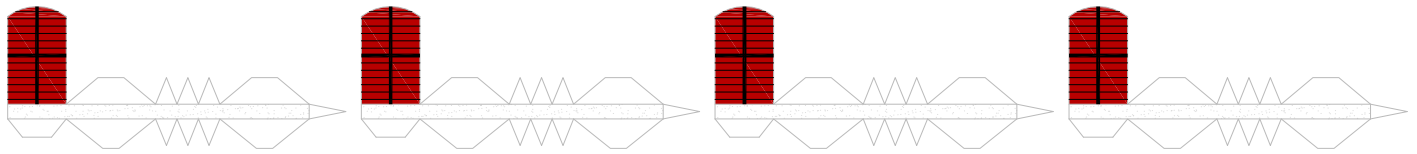
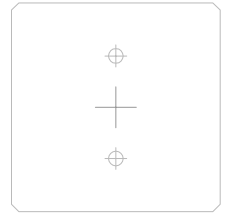
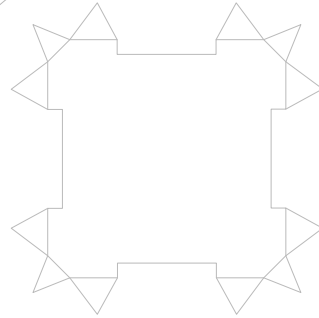
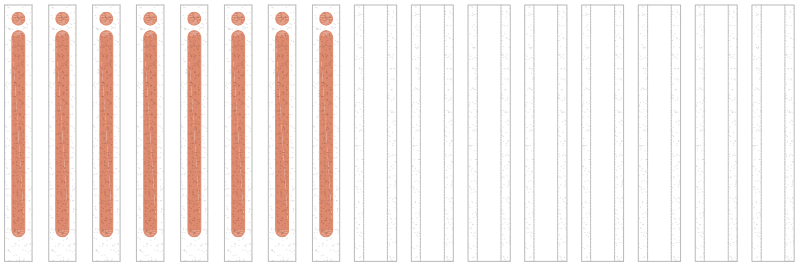
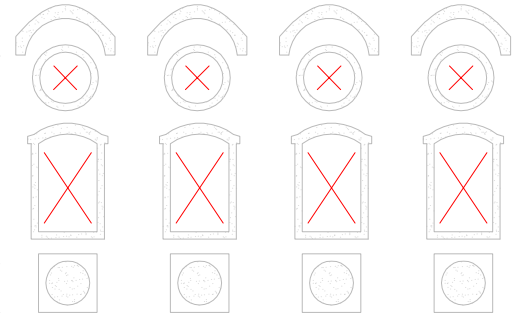
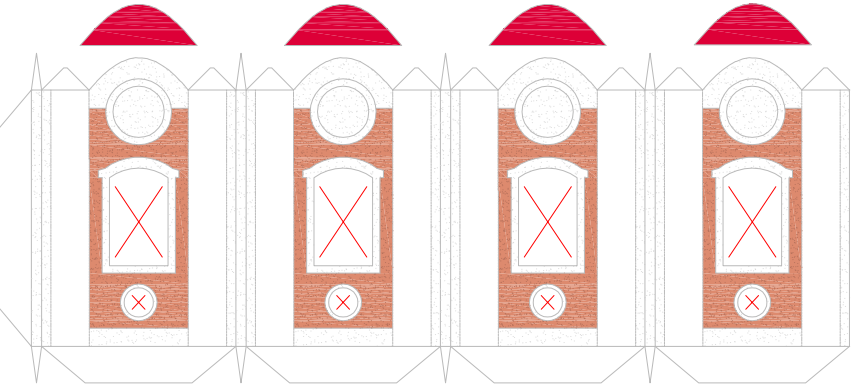
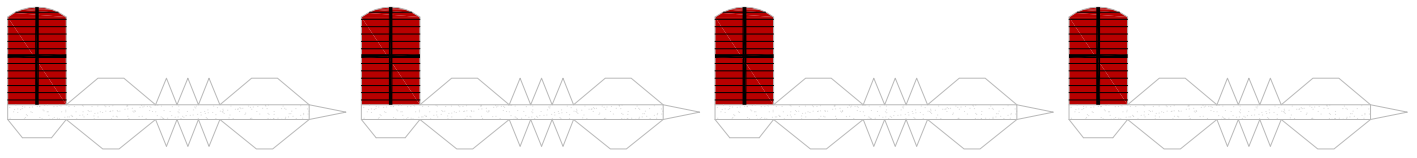


4x

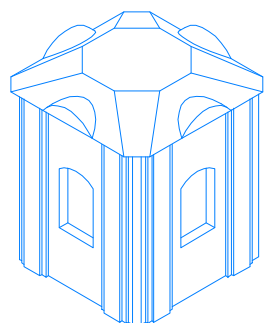


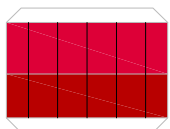
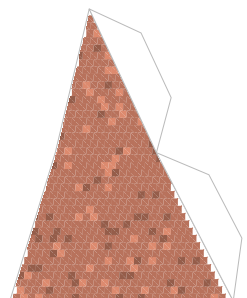
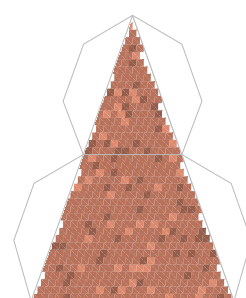
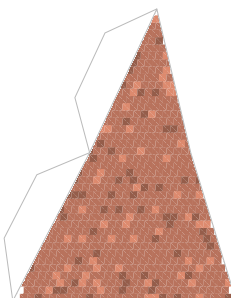
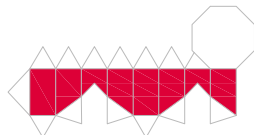
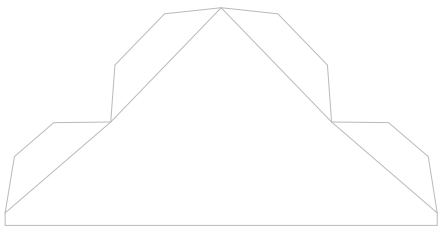
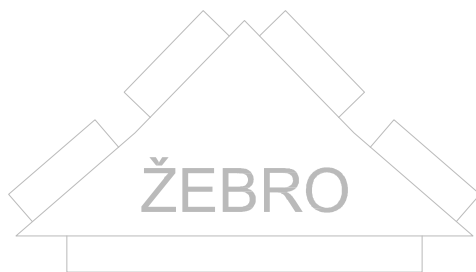
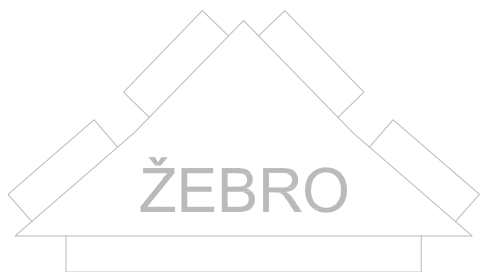
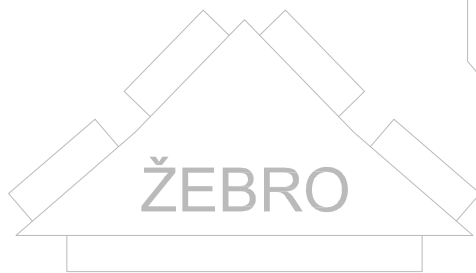
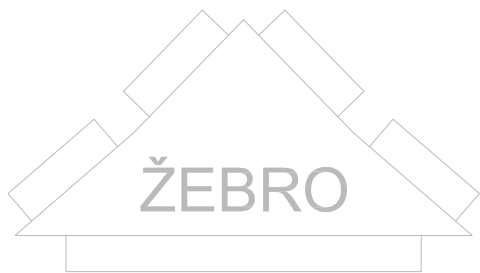
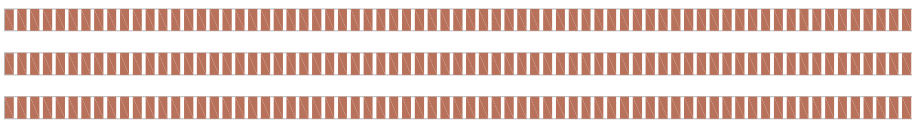
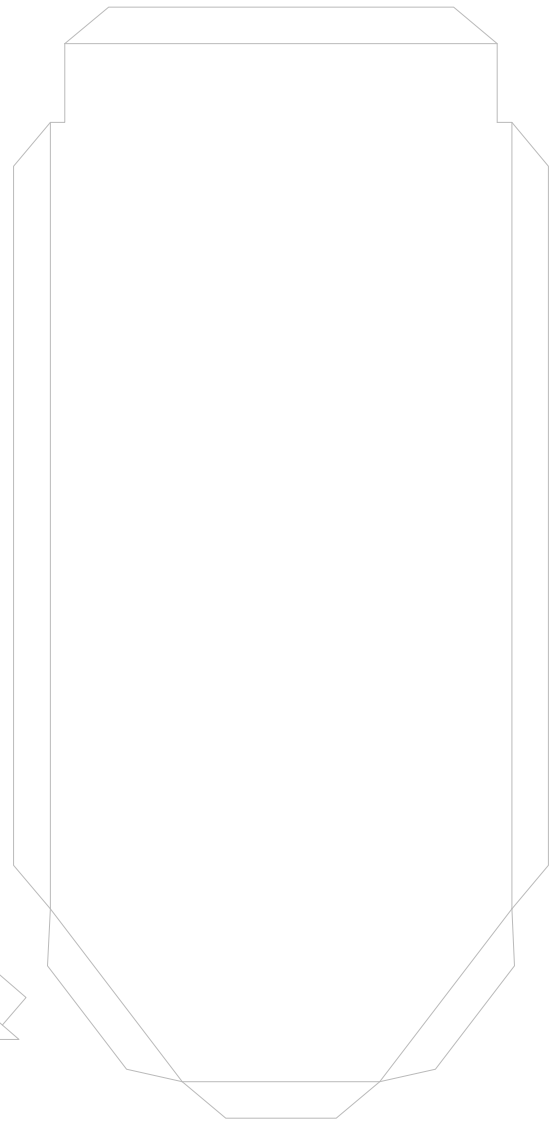
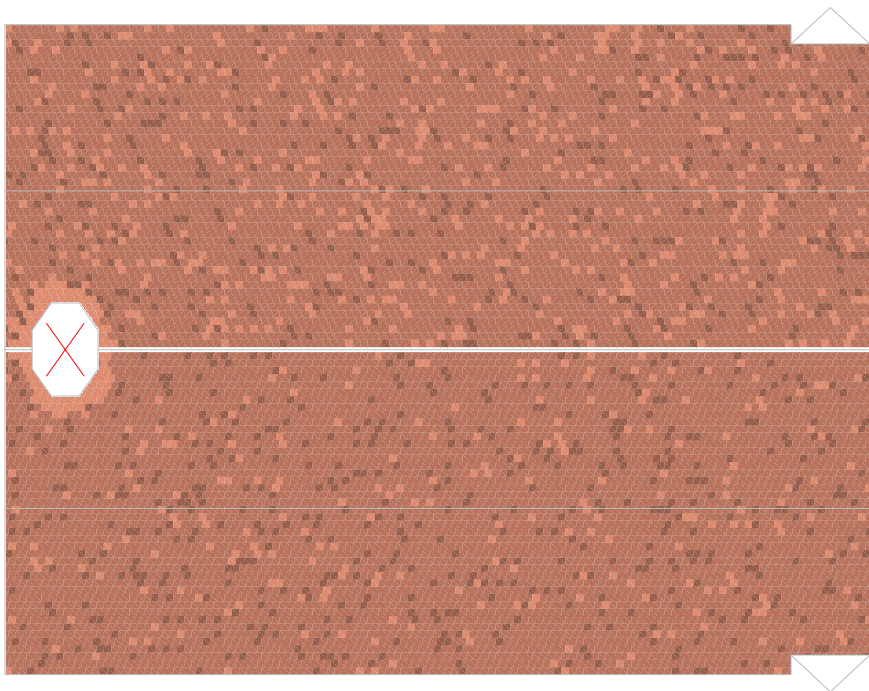
9





2x 10

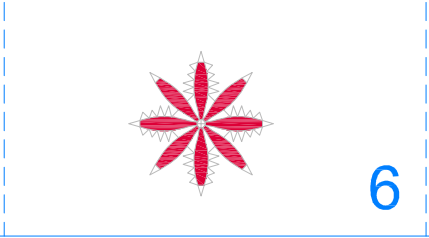
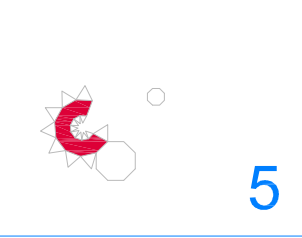
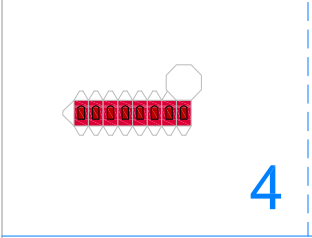
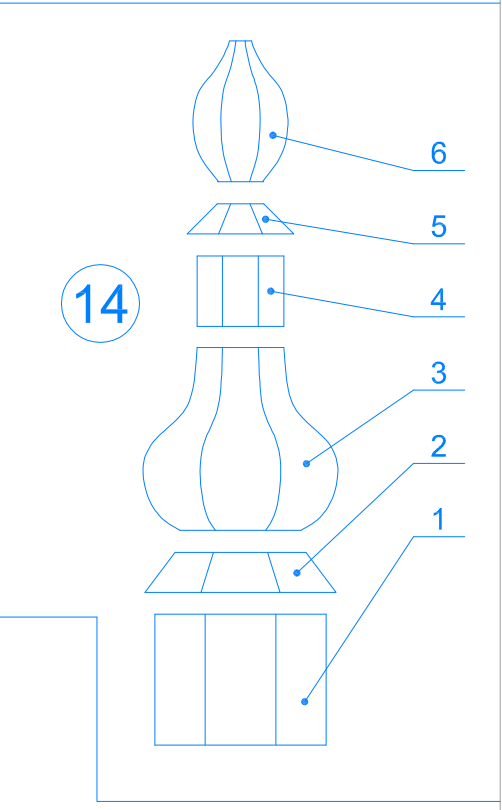
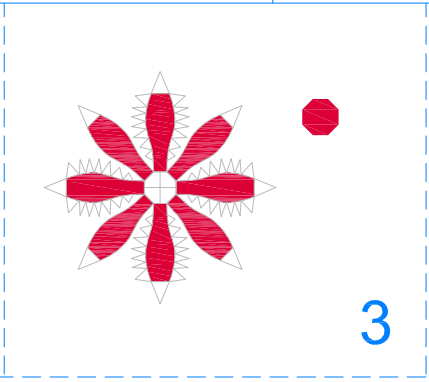
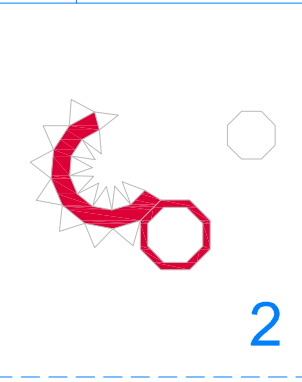
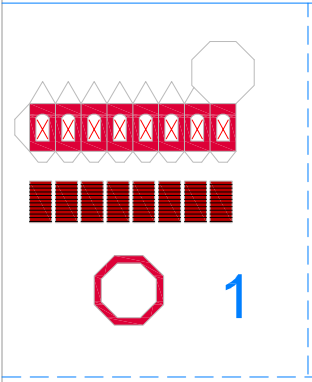
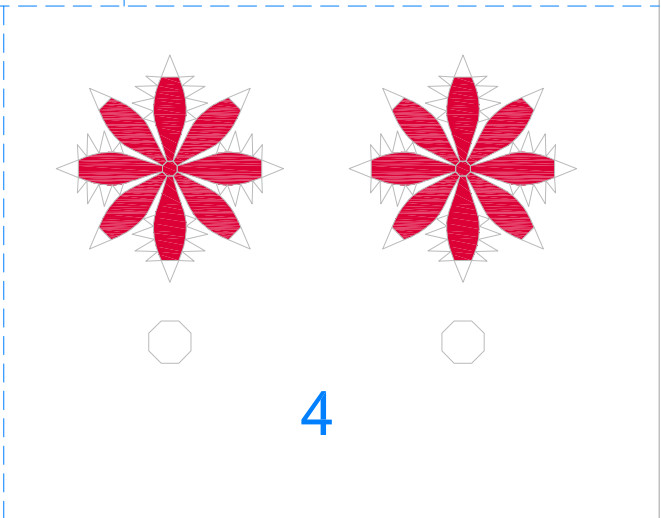
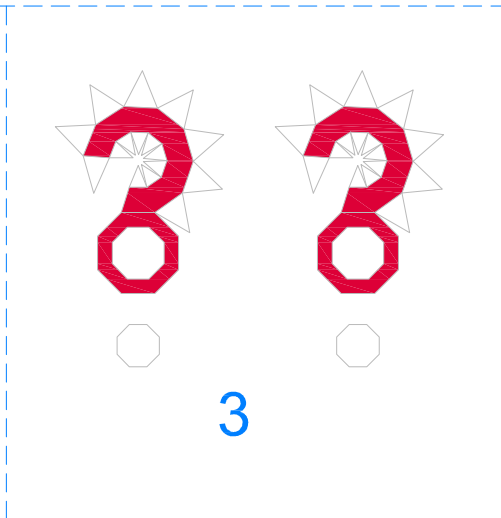
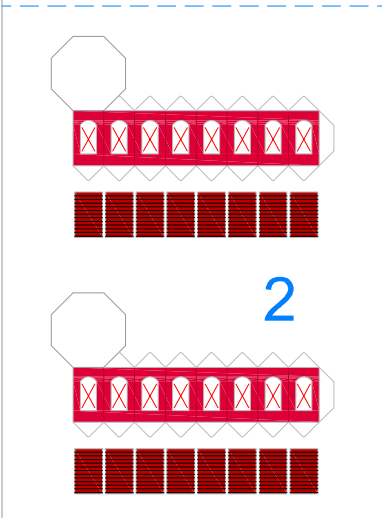
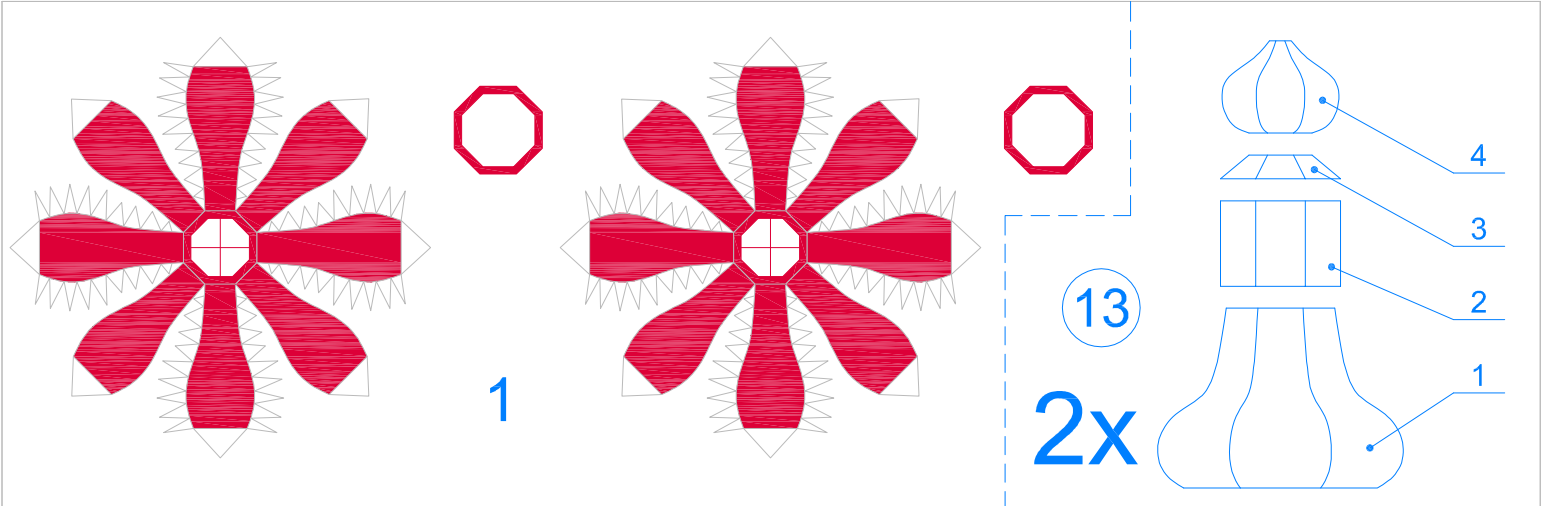




12

11

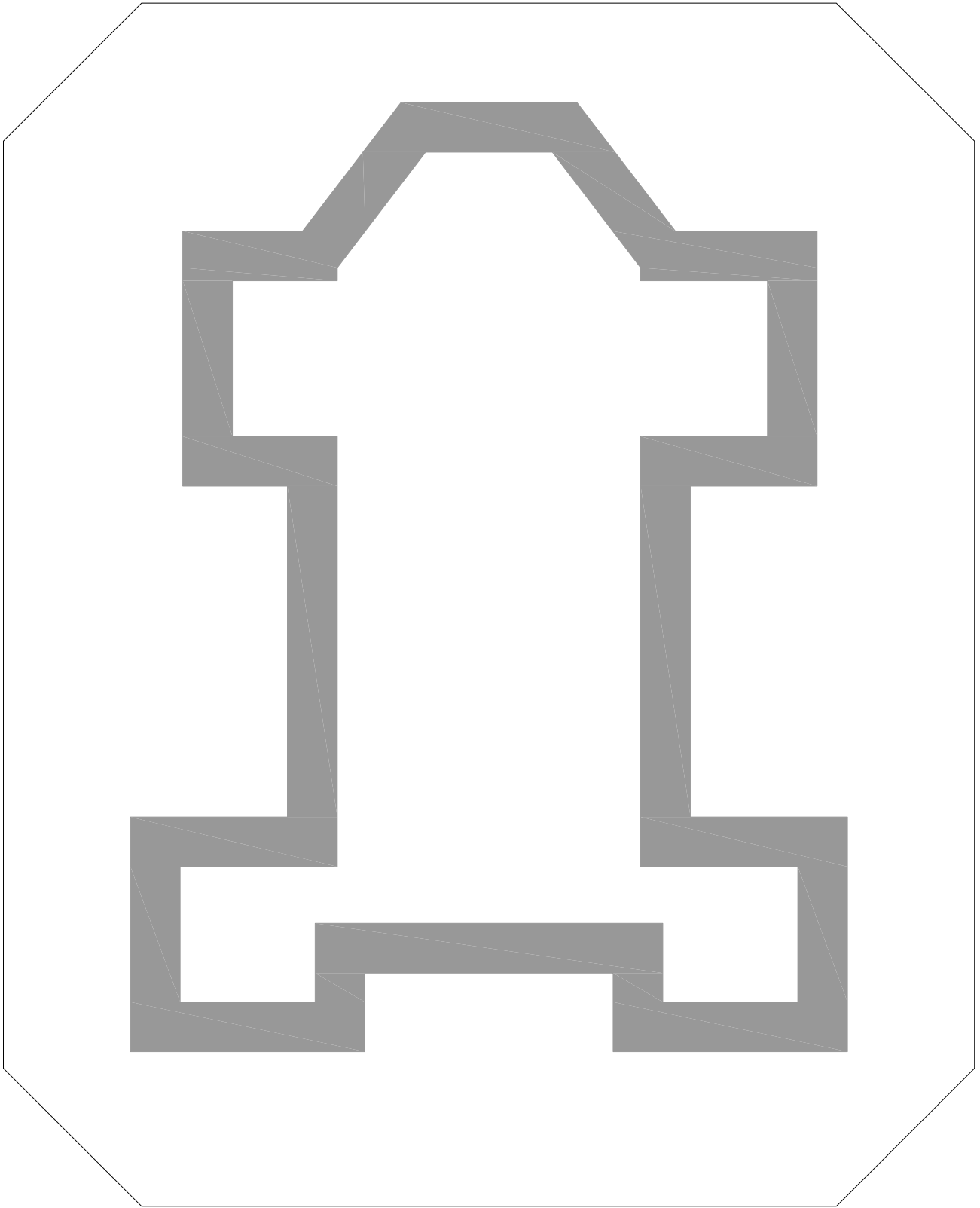


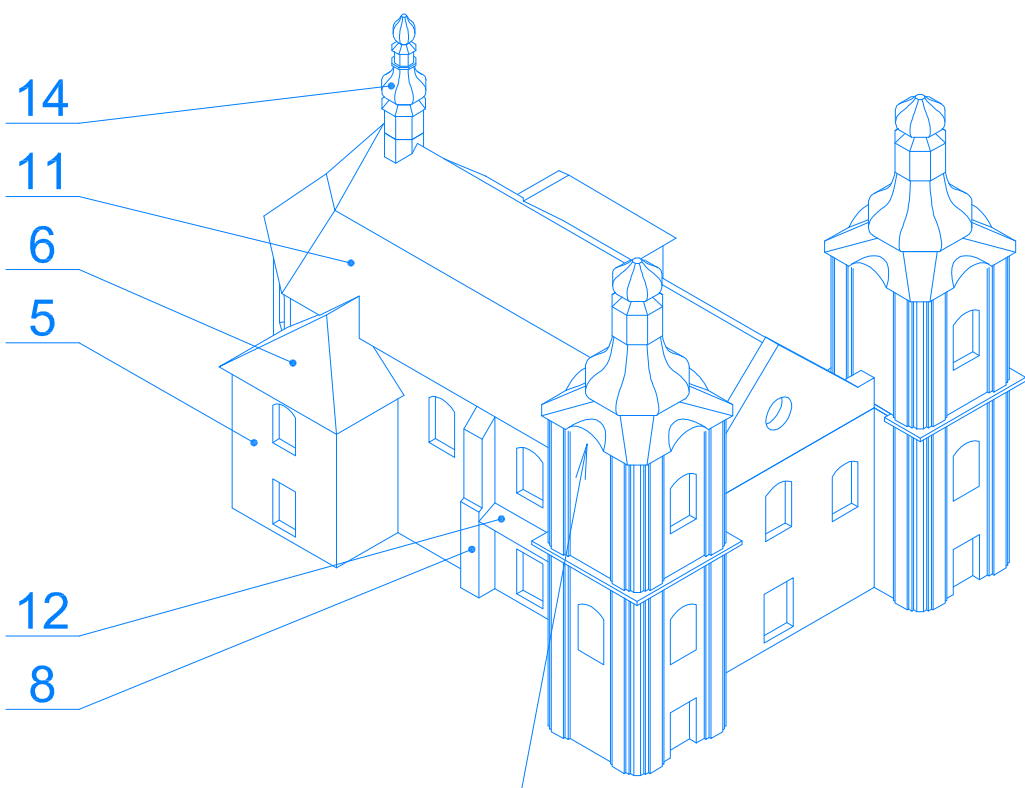
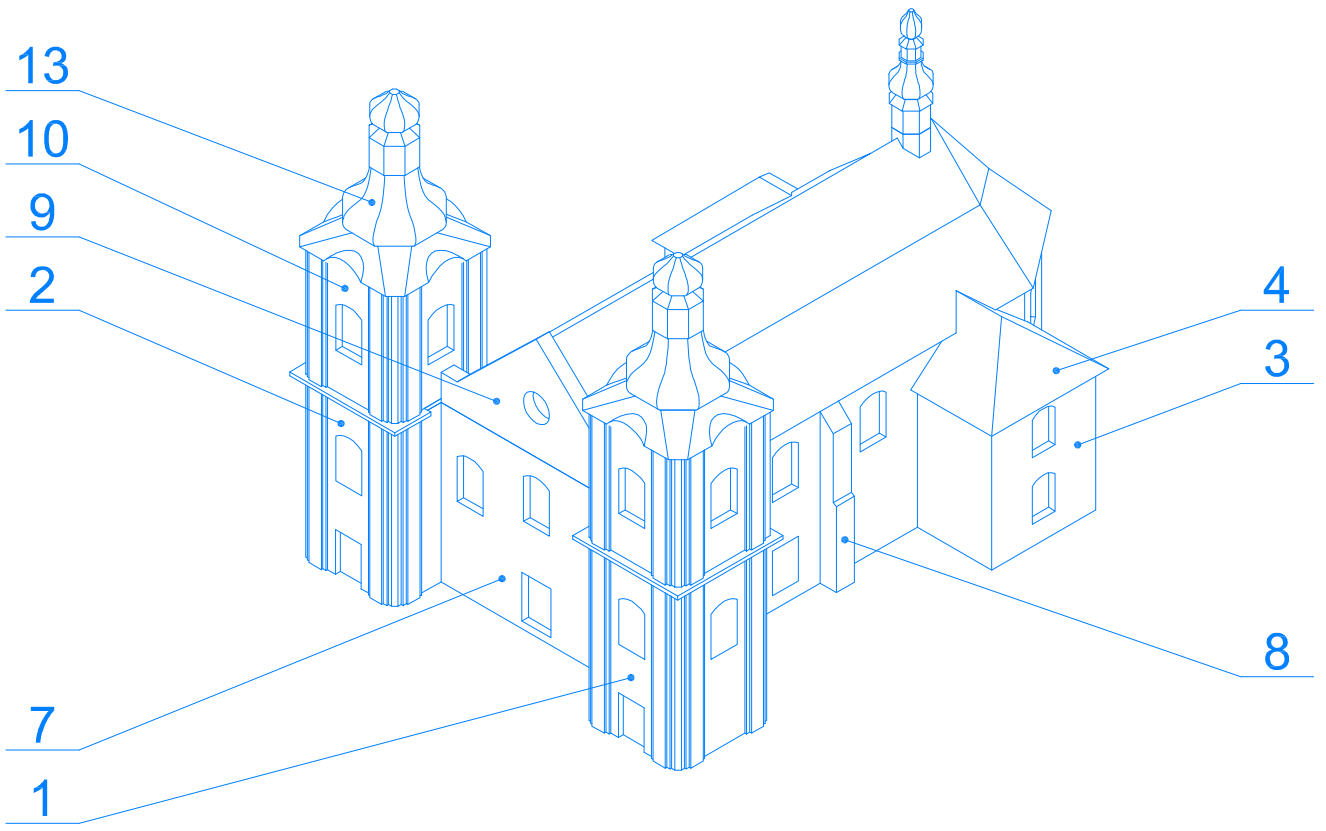


PARAPETY



120g papír





HODINY